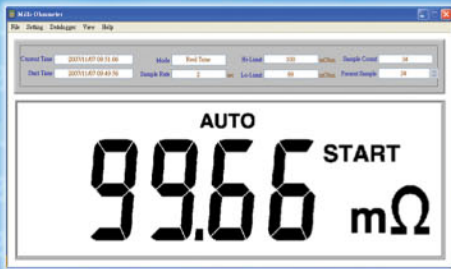


# TES

Reliable in Quality

## 700 MILLI-OHMMETER

- 5A Max. Test Current
- 6 Ranges (16mΩ ~ 6KΩ) with 1μΩ Best Resolution
- Measurement of Resistive and Inductive Materials
- Cable Length Measurement
- RS-232 Interface / Software





Reliable in Quality

# 700 MILLIOHMMETER

Electrical Specifications (23°C±5°C, 10% of range to 100% of range)

## (1) Manual Range:

	Range	Resolution	Accuracy
5 A	1.000 mΩ ~ 8.000 mΩ	1 uΩ	±0.1%±20 uΩ
	5.00 mΩ ~ 32.00 mΩ	10 uΩ	±0.1%±200 uΩ
	10.00 mΩ ~ 120.00 mΩ	10 uΩ	±0.1%±200 uΩ
1 A	4.00 mΩ ~ 40.00 mΩ	10 uΩ	±0.1%±200 uΩ
	15.00 mΩ ~ 160.00 mΩ	10 uΩ	±0.1%±200 uΩ
	50.00 mΩ ~ 600.00 mΩ	10 uΩ	±0.1%±200 uΩ
100 mA	0.0400 Ω ~ 0.4000 Ω	100 uΩ	±0.1%±2 mΩ
	0.1500 Ω ~ 1.6000 Ω	100 uΩ	±0.1%±2 mΩ
	0.5000 Ω ~ 6.0000 Ω	100 uΩ	±0.1%±2 mΩ
10 mA	0.400 Ω ~ 4.000 Ω	1 mΩ	±0.1%±20 mΩ
	1.500 Ω ~ 16.000 Ω	1 mΩ	±0.1%±20 mΩ
	5.000 Ω ~ 60.000 Ω	1 mΩ	±0.1%±20 mΩ
1 mA	4.00 Ω ~ 40.00 Ω	10 mΩ	±0.1%±200 mΩ
	15.00 Ω ~ 160.00 Ω	10 mΩ	±0.1%±200 mΩ
	50.00 Ω ~ 600.00 Ω	10 mΩ	±0.1%±200 mΩ
100 uA	0.0400 kΩ ~ 0.4000 kΩ	100 mΩ	±0.1%±2 Ω
	0.1500 kΩ ~ 1.6000 kΩ	100 mΩ	±0.1%±2 Ω
	0.5000 kΩ ~ 6.0000 kΩ	100 mΩ	±0.1%±2 Ω

## (2) Auto Range:

	Range	Resolution	Accuracy
5 A	1.000 mΩ ~ 8.000 mΩ	1 uΩ	±0.1%±20 uΩ
	8.00 mΩ ~ 120.00 mΩ	10 uΩ	±0.1%±200 uΩ
1 A	4.00 mΩ ~ 600.00 mΩ	10 uΩ	±0.1%±200 uΩ
100 mA	0.0400 Ω ~ 6.0000 Ω	100 uΩ	±0.1%±2 mΩ
10 mA	0.400 Ω ~ 60.000 Ω	1 mΩ	±0.1%±20 mΩ
1 mA	4.00 Ω ~ 600.00 Ω	10 mΩ	±0.1%±200 mΩ
100 uA	0.0400 kΩ ~ 6.0000 kΩ	100 mΩ	±0.1%±2 Ω

## General Specifications:

<b>Battery Type</b>	1.2V AA rechargeable battery x 8 (2500mAh)
<b>AC Adaptor</b>	AC 110V or 220V input, DC 12V/ 3A output
<b>Dimension</b>	257 (L) x 155 (W) x 57 (H) mm 10.1 (L) x 6.1 (W) x 2.2 (H) inch
<b>Weight</b>	1160 g / 40.9 oz (battery included)
<b>Accessories</b>	Users Manual x 1 1.2V AA rechargeable battery x 8 1 set of Kelvin clips (2 clips, 5A Max.) USB cable x 1 AC adaptor x 1



**TES ELECTRICAL ELECTRONIC CORP.**

7F, No.31 Lane 513, Rui Guang Rd., Neihu Dist, Taipei, Taiwan

Tel : (02) 2799-3660 Fax : 886-2-2799-5099

E-mail : tes@ms9.hinet.net

<http://www.tes.com.tw>